



## **B** **Configuring Windows Firewall for MassHunter GC/MS Acquisition Software**

Procedure for Turning Windows Firewall On	67
Procedure for Allowing Programs and Features Through Windows Firewall	73
Procedure for Turning Windows Features On or Off	78

Windows Firewall can help protect your computer from being accessed by hackers or malicious software through a network or the Internet. For this reason, Agilent recommends that you do turn on Windows Firewall and allow trusted programs such as the ones required by MassHunter GC/MS Acquisition Software to communicate through the firewall.

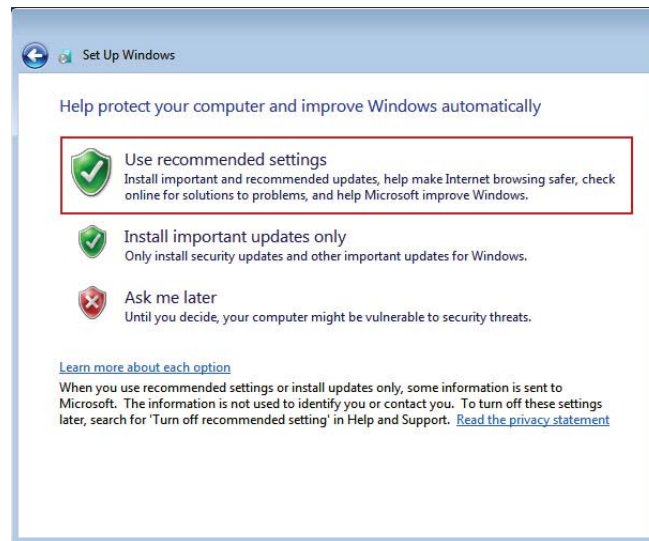
Perform the following procedures to configure Windows Firewall settings that allow Agilent MassHunter GC/MS Acquisition Software to work properly through a firewall. The instructions in this appendix apply to Microsoft Windows 7 Pro SP1 64-bit.



## Procedure for Turning Windows Firewall On

Windows Firewall is installed automatically with Windows Operating System. However, it may or may not be turned on depending on what you selected during Set Up Windows process after the initial power on of your brand new computer.

It is recommended that you select **Use recommended settings** in **Set Up Windows** (Figure 32).



**Figure 32** Set Up Windows after initial PC power on

When the **Use recommended settings** option is selected, the default firewall settings are:

- The firewall is *on*.
- The firewall is *on* for all network locations (Home or work, Public, or Domain).
- The firewall is *on* for all network connections.
- The firewall is blocking all connections that are *not* on the list of allowed programs.

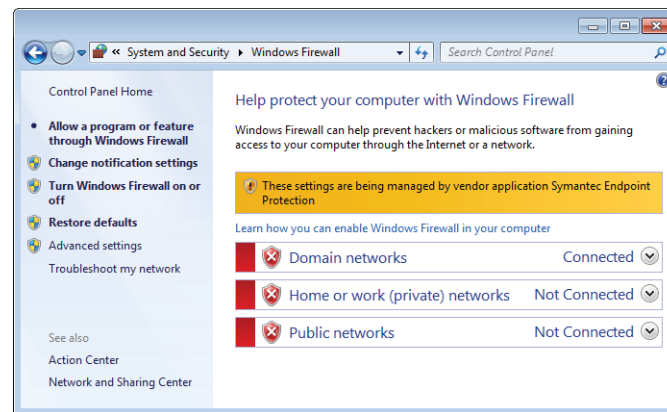
If you choose the **Ask me later** option in **Set Up Windows**, Windows Firewall is turned *off* by default.

### NOTE

It is recommended that Windows Firewall be turned on to protect your computer.

**To turn Windows Firewall *on*, perform the following steps:**

- 1 Log on to your computer with administrator privileges.
- 2 Click on **Start > Control Panel > System and Security > Windows Firewall**. If you do not see **System and Security** in Control Panel, you can alternatively click **Windows Firewall**.
- 3 If you get a **Windows Firewall** window that looks like [Figure 33](#) on page 68, it means that the computer is being managed by your IT department. You will not be able to make changes to the firewall settings on your own. Please contact your IT department for assistance before continuing.



**Figure 33** Windows Firewall managed by your IT department

- 4 If you get a Windows Firewall window that looks like Figure 34, click **Turn Windows Firewall on or off** on the left pane.

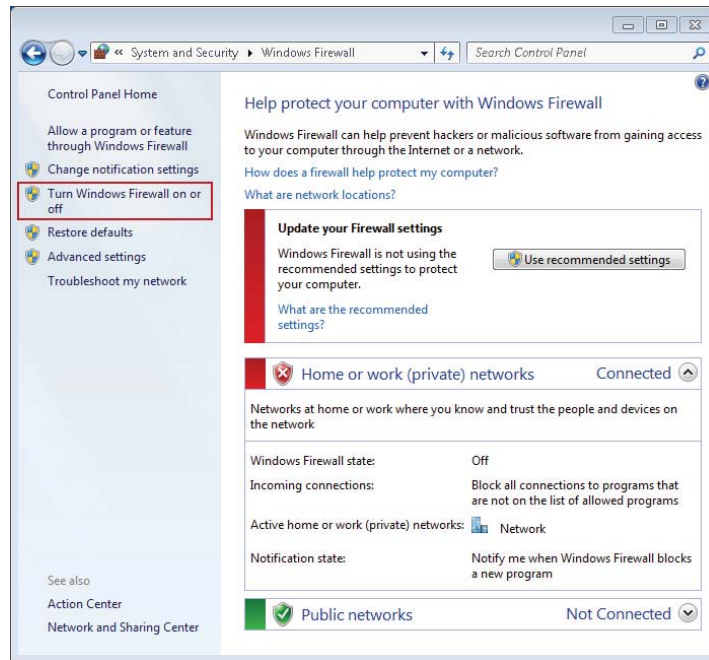
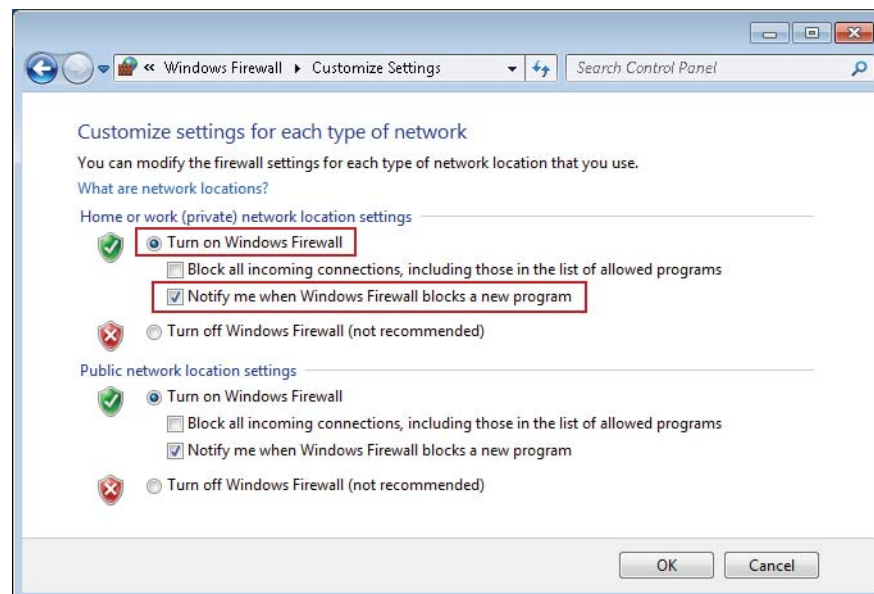


Figure 34 Windows Firewall off

- 5 In the **Customize Settings** window (Figure 35), select the following options for each type of network location that you use:
- **Turn on Windows Firewall**
  - **Notify me when Windows Firewall blocks a new program**

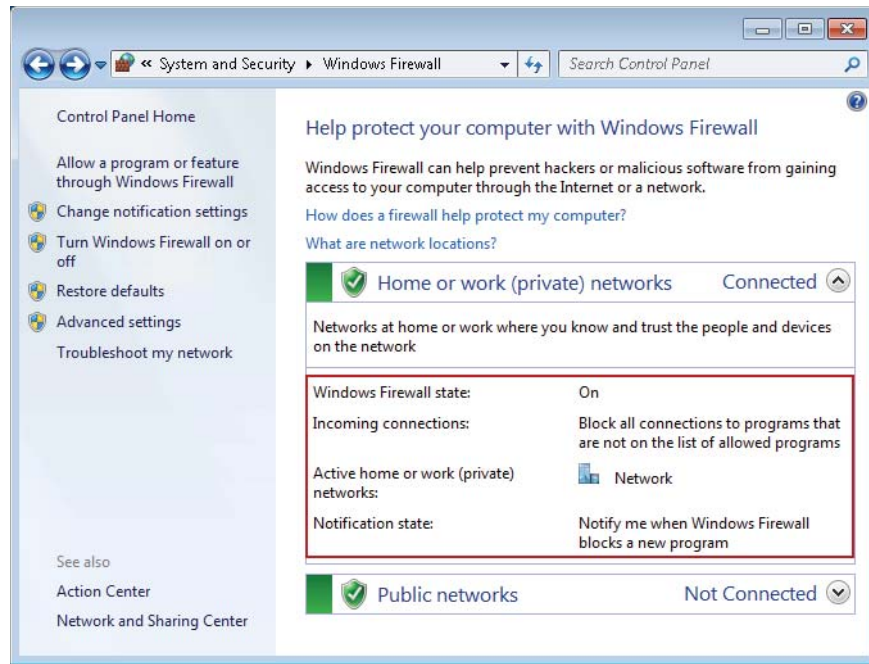
**CAUTION**

Do *not* check **Block all incoming connections, including those in the list of allowed programs**.



**Figure 35** Customize Settings window

- 6 Click **OK**. Windows Firewall is now turned *on* with the recommended settings (Figure 36 on page 71).



**Figure 36** Windows Firewall on

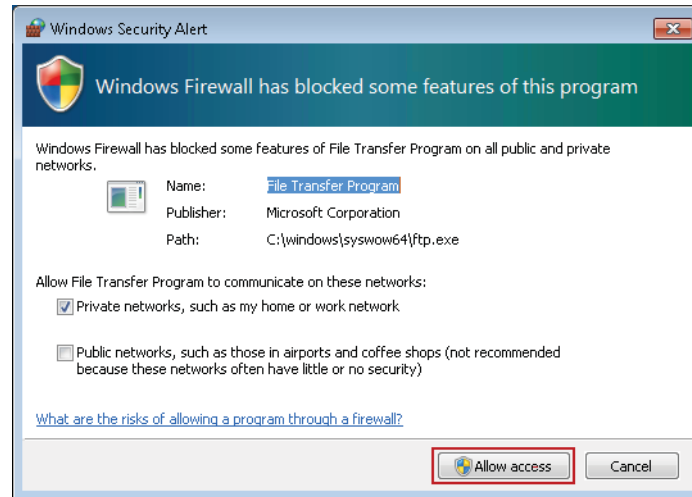
With the **Notify me when Windows Firewall blocks a new program** option selected, when you run a program that is not on the allowed list, the **Windows Security Alert** window (Figure 37 on page 72) appears prompting you to allow the blocked program through the firewall.

When you see the **Windows Security Alert** window, you must click **Allow access** if the program shown is from a trusted publisher or source. Refer to Table 6 on page 74 for a list of programs that need to be allowed through the firewall in order for Agilent MassHunter Acquisition software to work properly.

**CAUTION**

If you click **Cancel** in the Windows Security Alert window, the program will be blocked from communicating through Windows Firewall and will not run.

## Procedure for Turning Windows Firewall On



**Figure 37** Windows Security Alert window

## Procedure for Allowing Programs and Features Through Windows Firewall

When Agilent MassHunter GC/MS Data Acquisition is installed on the computer, the software and all of its required components are automatically put on the list of allowed programs and features so the required components can communicate through Windows Firewall.

If you are having issues communicating with GC/MS instruments through the firewall, you should verify that the required programs listed in [Table 6](#) on page 74 have been properly added to the Windows Firewall Allowed list and that the appropriate check boxes are selected for the programs under the **Name** column and under the **Home/Work (Private)** or **Public** column as shown in [Figure 38](#) on page 75.



## Procedure for Allowing Programs and Features Through Windows Firewall

**Table 6** Required Programs on Windows Firewall Allowed List

Programs	Paths
File and Printer Sharing	Unknown
File Transfer Program	C:\windows\system32\ftp.exe
File Transfer Program	C:\windows\syswow64\ftp.exe
GCDriverEvents	Unknown
httpdmsd tool	C:\GCMS\msexe\httpdmsd.exe
instrument control and calibration	C:\GCMS\msexe\msinsctl.exe
Microsoft Telnet Client	C:\Windows\system32\telnet.exe
MSD Firmware Update	C:\GCMS\firmware\5973N\msupdate.exe
MSD Firmware Update	C:\GCMS\firmware\5977N\msupdate.exe
rpcinfo tool	C:\GCMS\msexe\rpcinfo.exe
scqiolib tool	C:\GCMS\msexe\scqiolib.exe
scs tool	C:\GCMS\msexe\scs.ex
Trivial File Transfer Protocol App	C:\Windows\system32\tftp.exe

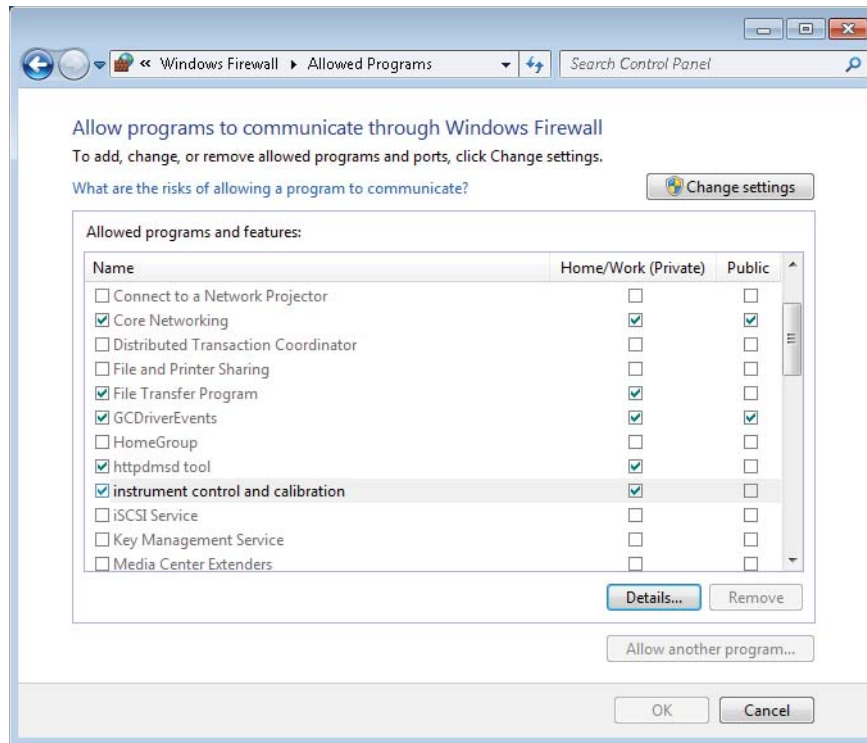
### Adding programs to Windows Firewall Allowed list

If the required programs are *not* on the list, you will need to add them manually.

- 1 In the **Windows Firewall** window (Figure 36 on page 71) on the left pane, click on **Allow a program or feature through Windows Firewall**.
- 2 In the **Allow Programs** window (Figure 38 on page 75), if the program is already on the Allowed programs and features list (also known as the Exceptions list), be sure to check the box next to the program and network location(s) you want to allow communication. You must click **Change settings** first and then select the appropriate check boxes.

## Procedure for Allowing Programs and Features Through Windows Firewall

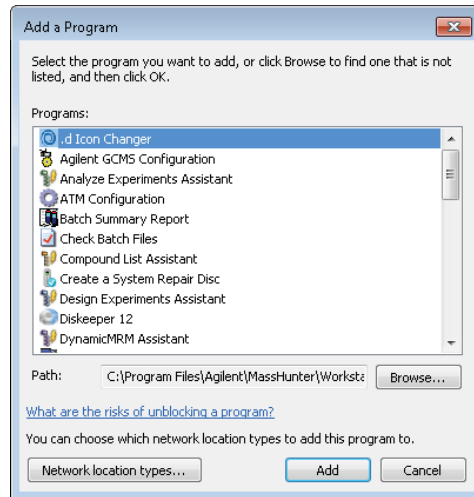
- 3 Once you are done selecting the program(s) on allow to communicate through Windows Firewall, click **OK**.



**Figure 38** Allowed Programs window

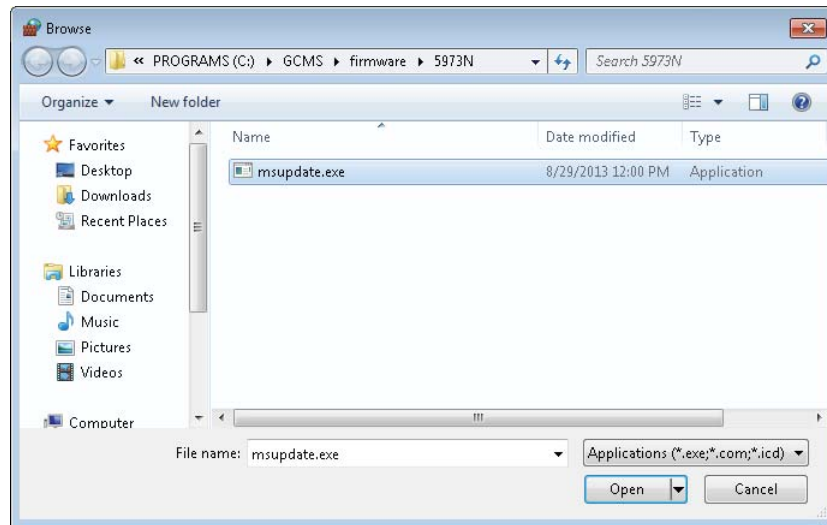
- 4 If the program is *not* on the list of **Allowed programs and features**, you can add it to the list by performing the following steps:
  - a Click **Change settings** and then select **Allow another program** in the **Allowed Programs** window (Figure 38).
  - b In the **Add a Program** window (Figure 39), click **Browse** to open the **Browse** window.

## Procedure for Allowing Programs and Features Through Windows Firewall



**Figure 39** Add a Program window

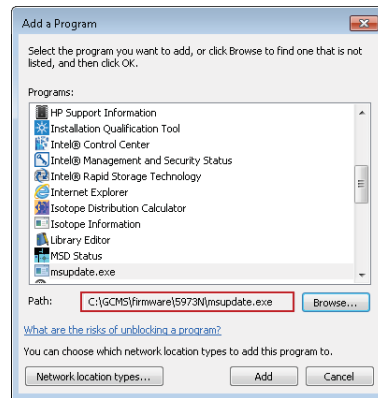
- c** In the **Browse** window (Figure 40), navigate to the path where the program you want to add is located (refer to Table 6 on page 74), then select the program file, and click **Open**.



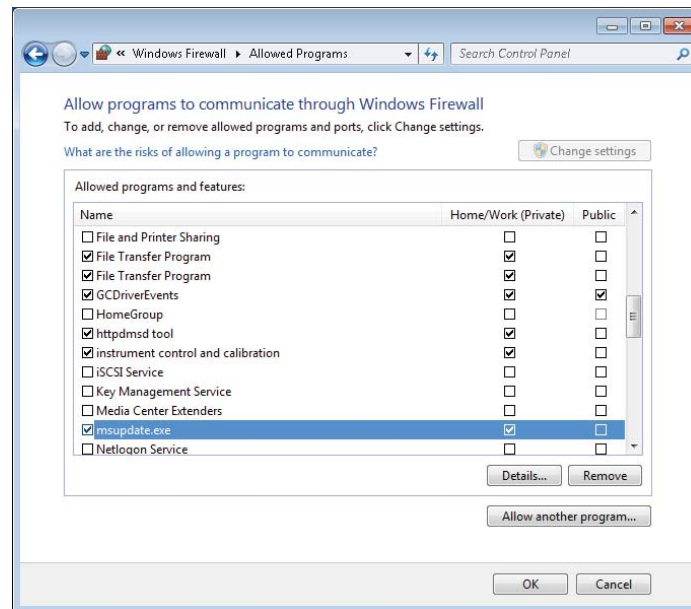
**Figure 40** Browse window

## Procedure for Allowing Programs and Features Through Windows Firewall

- d In the **Add a Program** window (Figure 41), verify that the program file you have selected is shown in the **Path** field before clicking **Add**. Once the program is added to the Allowed list, you should see a check mark next to it (Figure 42).



**Figure 41** Adding a program to Windows Firewall Allowed list

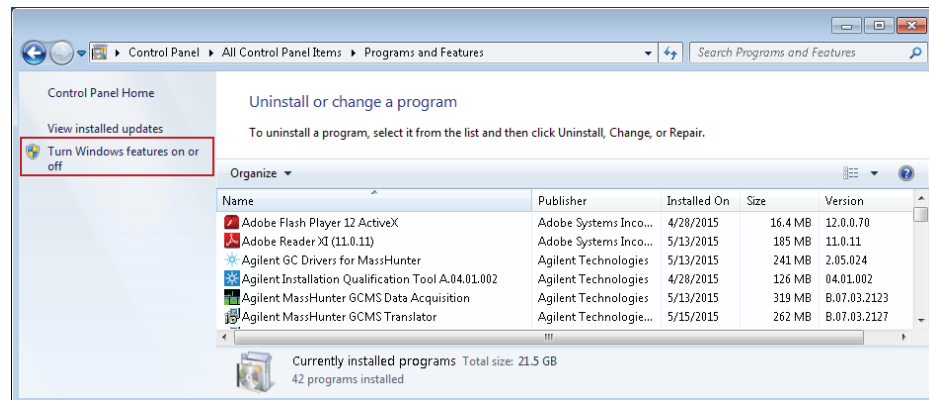


**Figure 42** Program is added to Windows Firewall Allowed

## Procedure for Turning Windows Features On or Off

Programs such as **Microsoft Telnet Client** and **Trivial File Transfer Protocol (TFTP)** require that you turn on Windows features from the Programs and Features.

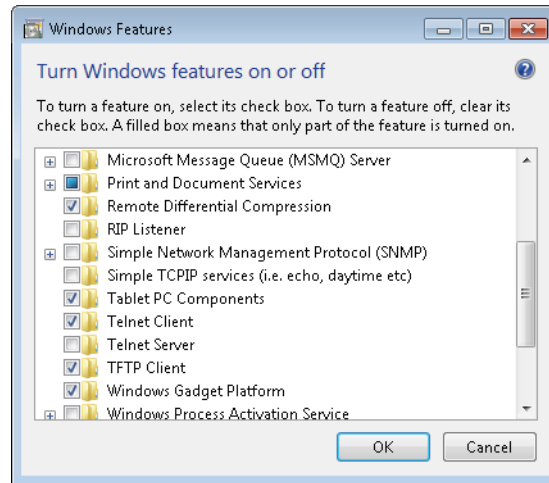
- 1 Click **Start > Control Panel > Programs and Features** (if Control Panel is set to “View by: Large icons” or “View by: Small icons”).



**Figure 43** Turn Windows features on or off

- 2 On the left panel of **Programs and Features** window (**Figure 43**), click **Turn Windows features on or off**.
- 3 In the **Windows Features** window (**Figure 44** on page 79), select the feature you want to turn on by selecting the check box next to its name. To turn off the feature, clear the check box next to its name.
- 4 Click **OK** to exit the window.

## Procedure for Turning Windows Features On or Off



**Figure 44** Select Windows features to turn on or off