

Workstation Migration for OpenLab CDS EZChrom Edition to OpenLab CDS

Overview

OpenLab CDS versions 2.2 and higher comes with a migration tool that automates the process of migrating data, instrument information, and user information, from OpenLab CDS EZChrom Edition versions A.04.06 and A.04.07. This tool is easy to use and reduces the manual migration time.

Using the migration tool will allow you to:

- Reuse EZChrom Edition data and results in OpenLab CDS Workstation
- Import and reuse methods from EZChrom Edition in OpenLab CDS including compound identification settings and integration events
 - Method import is automated in version 2.3.
- Complete the transfer of the following user and instrument information
 - Users, user groups, roles and permissions
 - Instruments configuration
- Create series of reports on the details of export and how it is mapped to OpenLab CDS

Migration Steps

1. **Planning step** – Verify instrument and driver compatibilities, confirm PC operating system and software versions.
2. **Export step** – This will export raw and results data, shared services information, instrument configuration, and user roles to a USB drive or a networked location. The export folder will contain:
 - a. EZChromDataExport – zip package containing the EZChrom data
 - b. Export File Report – List of all the files that are included in the OpenLab CDS EZChrom Edition export that are in the EZChrom Export zip package.
 - c. Instrument Report – HTML file with instrument information
 - d. OpenLabSharedServicesExport – Zip package containing the OpenLab Shared Services data, such as security, authentication, roles, administration information and instrument configuration.
 - e. Package. Descriptor – XML file containing details of the mapping to the import
 - f. Project report – HTML file with project information
 - g. Role Report – HTML file with user role information
 - h. User and Group Report – HTML file with users and groups.
3. **Import step** – The migration tool runs on the OpenLab CDS workstation and imports the data from the export location into the newly installed OpenLab CDS Workstation. The following tasks are performed:
 - a. A default project group is automatically created in the local OpenLab CDS Workstation installation with subprojects for each EZChrom project.
 - b. Data from Export package is extracted to a staging location.
 - c. Data is imported so that the OpenLab CDS Data Analysis can read them.
 - d. Projects are created in OpenLab CDS to match those from EZChrom Edition installation.
 - e. Users and groups are created in OpenLab CDS to match those from EZChrom Edition installation.
 - f. Roles are created in OpenLab CDS based on the configuration in the EZChrom Edition installation.
 - g. Any Active instrument is recreated from EZChrom Edition.

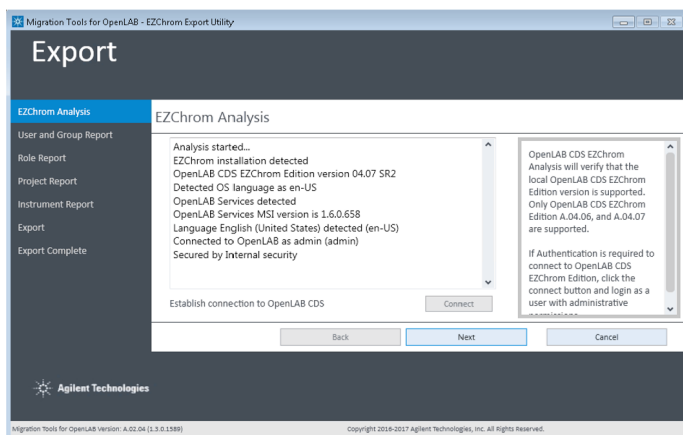


Figure 1. When the migration tool is launched, it will verify that a supported version of EZChrom exists on the source workstation.

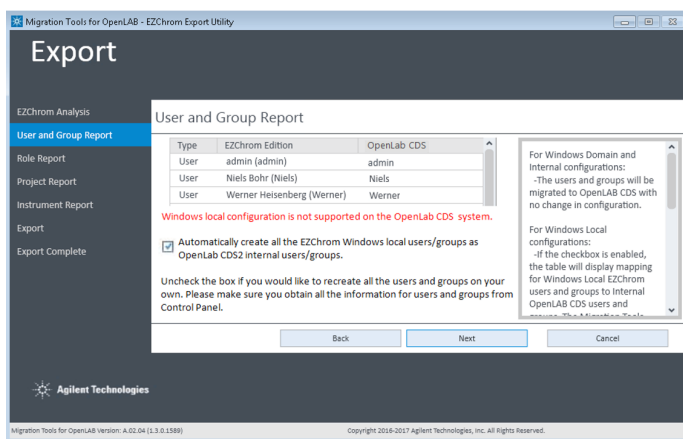


Figure 2. Automatically recreate all the OpenLab CDS EZChrom Edition Windows local users and groups as OpenLab CDS Version 2.x internal users and groups.

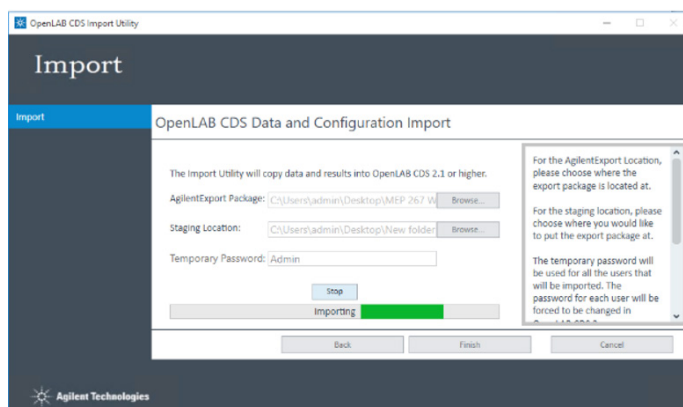


Figure 3. OpenLab CDS Data and Configuration Import in progress.

Compatibility

Source	Target
OpenLab CDS EZChrom Edition <ul style="list-style-type: none">– Workstation only– Versions A.04.06, A.04.07, and A04.07 SR1 and SR2– Windows 7 and 8– File system only, including AFS (Data Analysis add-ons are not supported)– For domain authentication, single domain only is supported– When using domain authentication, the target machine must be in the same single domain as the source machine	OpenLab CDS <ul style="list-style-type: none">– Workstation only (Not Workstation Plus)– Version 2.3– Windows 8 and 10– When using domain authentication, the target machine must be in the same single domain as the source Machine– Note: Initial install should not have authentication configured<ul style="list-style-type: none">– This will be configured by Migration tool.

Availability

The migration tool is available on the OpenLab CDS USB drive and on Agilent SubscribeNet free of charge.

The tool is available in English, Japanese, Chinese, and Brazilian Portuguese languages.

Learn more

Contact your local Agilent sales representative or visit
www.agilent.com/chem/openlabcds

See how easy it is to migrate your data to OpenLab CDS
www.agilent.com/chem/data-migration

CrossLab Technology Refresh Services
<https://www.agilent.com/en/products/crosslab-instrument-services/method-applications/technology-refresh-services>

www.agilent.com/chem/openlab

This information is subject to change without notice.

© Agilent Technologies, Inc. 2018
Printed in the USA, August 1, 2018
5994-0176EN

